

888 BRICKELL

DOLCE & GABBANA

M I A M I



RESIDENCE C

FLOOR 63

ROOMS

- 2 Bedrooms
- 2 Bathrooms
- Powder Room

SQUARE FOOTAGES (SQUARE METERS)

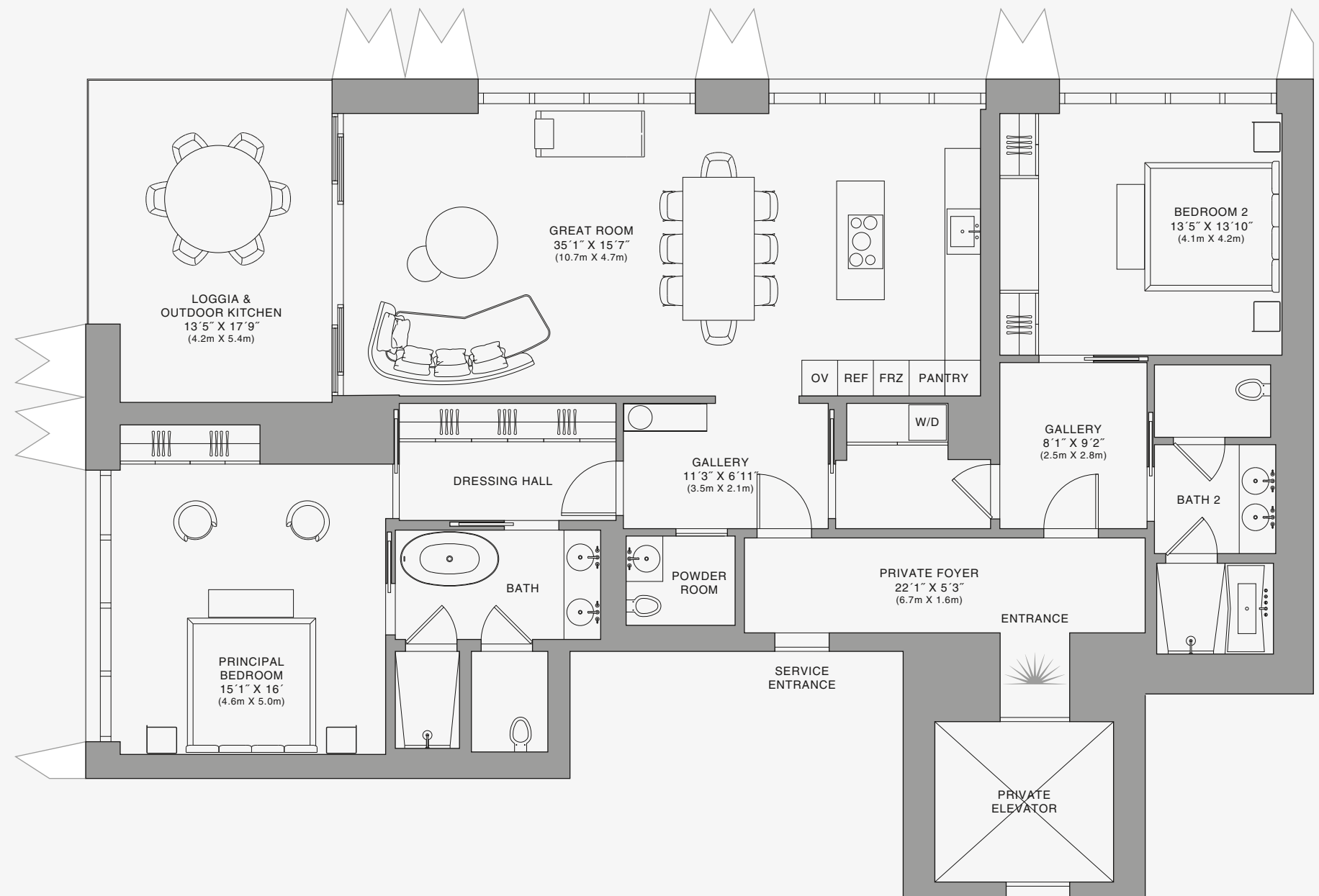
Indoor: 2,225 SQF (207 SM)

Outdoor: 262 SQF (24 SM)

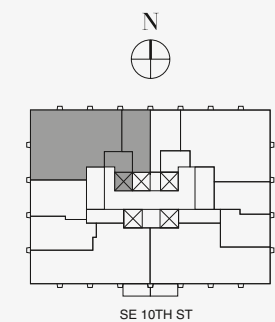
Total: 2,487 SQF (231 SM)

FEATURES

- 888 Suite & 888 Room
- Furniture by Dolce&Gabbana
- 11' Ceiling Height
- Loggia & Outdoor Kitchen
- Views: North West



Biscayne Bay



Stated dimensions are measured to the exterior boundaries of the exterior walls and the centerline of interior demising walls and in fact vary from the dimensions that would be determined by using the description and definition of the "Unit" set forth in the Declaration (which generally only includes the interior airspace between the perimeter walls and excludes interior structural components). For your reference, the area of the Unit, determined in accordance with those defined unit boundaries, is set forth on Exhibit "3" to the Declaration of Condominium. Note that measurements of rooms set forth on this floor plan are generally taken at the greatest points of each given room (as if the room were a perfect rectangle), without regard for any cutouts. Accordingly, the area of the actual room will typically be smaller than the product obtained by multiplying the stated length times width. All dimensions are approximate and may vary with actual construction, and all floor plans and development plans are subject to change. The Condominium is not owned, developed or sold by Dolce & Gabbana S.r.l or any of its affiliates (the "Brand"). Developer uses Dolce & Gabbana marks pursuant to a license agreement with the Brand, terminable according to its terms. The Brand assumes no responsibility or liability in connection with the project, and makes no representation or warranty in respect thereof.

888 Residence



888 BRICKELL

DOLCE & GABBANA

M I A M I



RESIDENCE C

FLOOR 63

ROOMS

2 Bedrooms
2 Bathrooms
Powder Room

SQUARE FOOTAGES (SQUARE METERS)

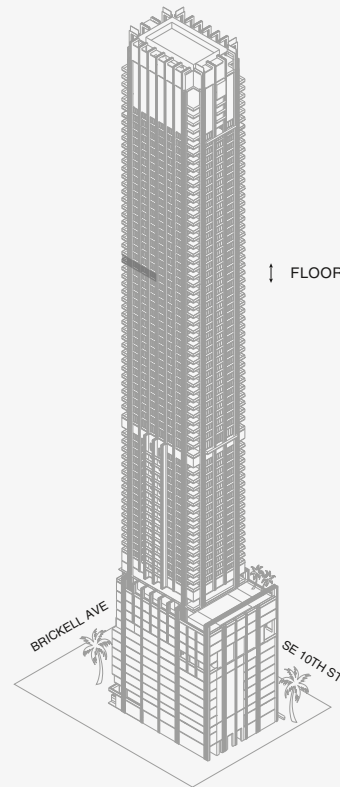
Indoor: 2,225 SQF (207 SM)

Outdoor: 262 SQF (24 SM)

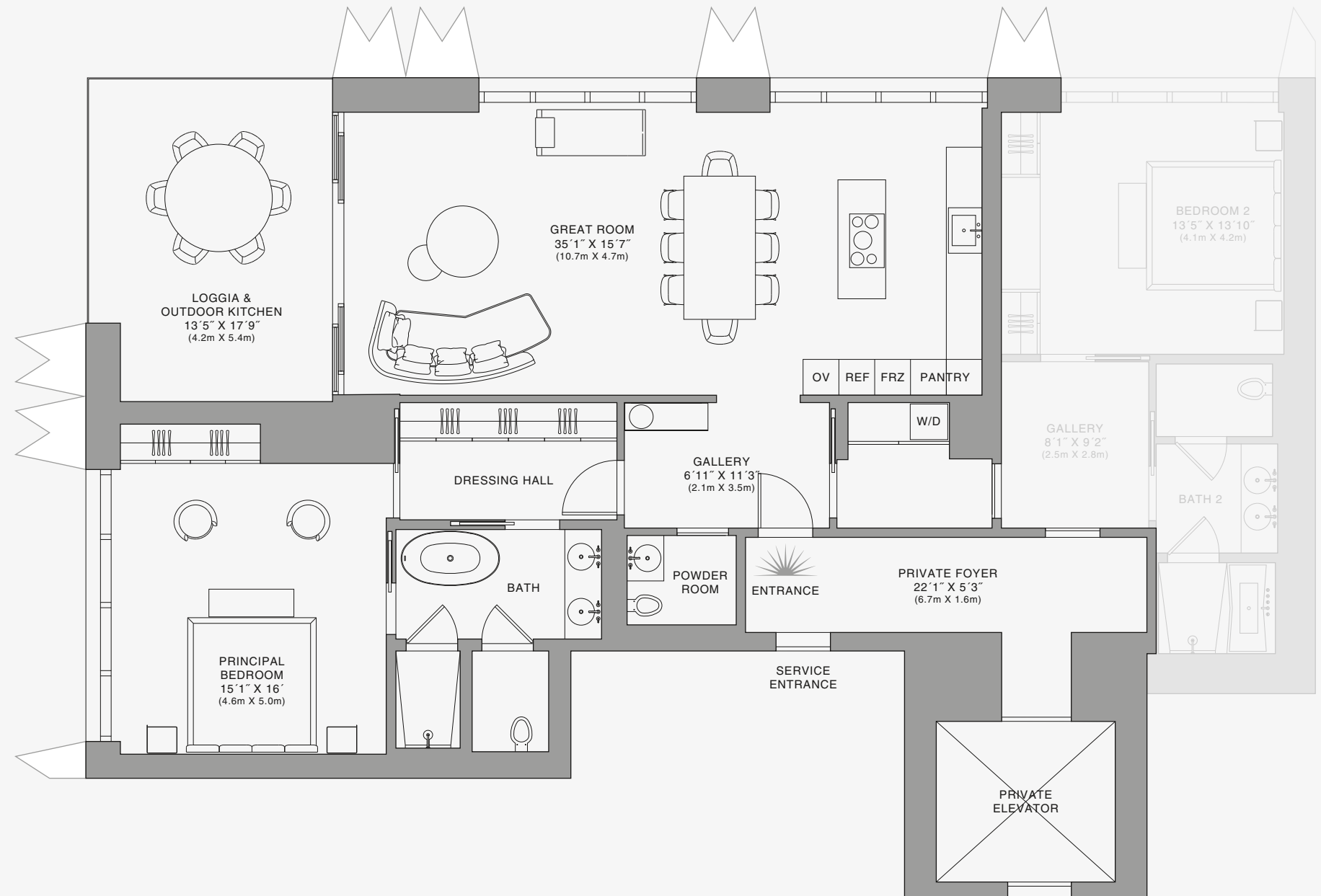
Total: 2,487 SQF (231 SM)

FEATURES

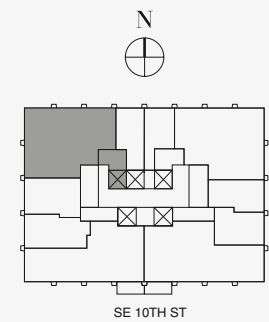
888 Suite & 888 Room
Furniture by Dolce&Gabbana
11' Ceiling Height
Loggia & Outdoor Kitchen
Views: North West



FLOOR 63



Biscayne Bay



Stated dimensions are measured to the exterior boundaries of the exterior walls and the centerline of interior demising walls and in fact vary from the dimensions that would be determined by using the description and definition of the "Unit" set forth in the Declaration (which generally only includes the interior airspace between the perimeter walls and excludes interior structural components). For your reference, the area of the Unit, determined in accordance with those defined unit boundaries, is set forth on Exhibit "3" to the Declaration of Condominium. Note that measurements of rooms set forth on this floor plan are generally taken at the greatest points of each given room (as if the room were a perfect rectangle), without regard for any cutouts. Accordingly, the area of the actual room will typically be smaller than the product obtained by multiplying the stated length times width. All dimensions are approximate and may vary with actual construction, and all floor plans and development plans are subject to change. The Condominium is not owned, developed or sold by Dolce & Gabbana S.r.l or any of its affiliates (the "Brand"). Developer uses Dolce & Gabbana marks pursuant to a license agreement with the Brand, terminable according to its terms. The Brand assumes no responsibility or liability in connection with the project, and makes no representation or warranty in respect thereof.



JDS DEVELOPMENT GROUP

info@888dolcegabbana.com

888 Suite



888 BRICKELL

DOLCE & GABBANA
M I A M I



RESIDENCE C

FLOOR 63

ROOMS

2 Bedrooms
2 Bathrooms
Powder Room

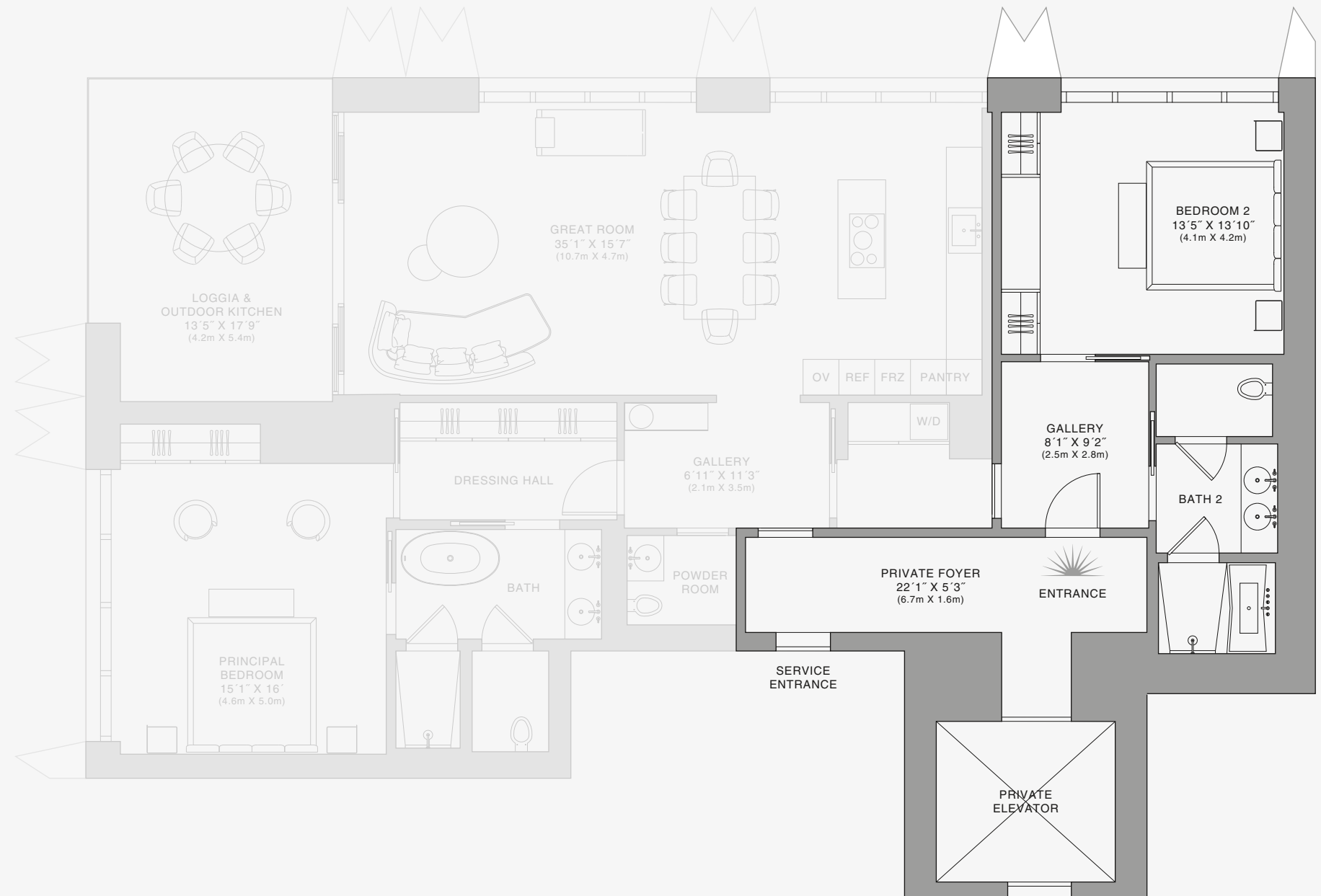
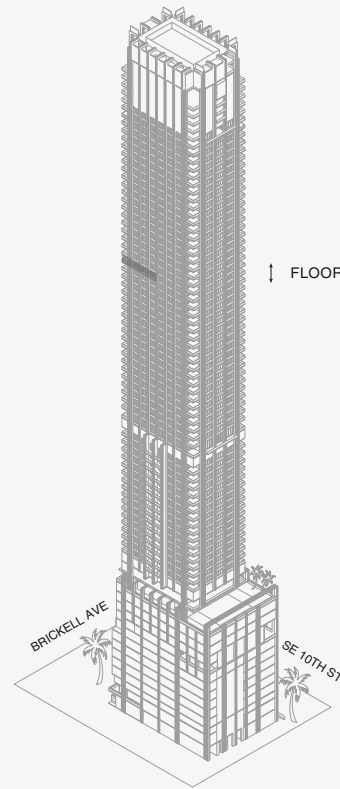
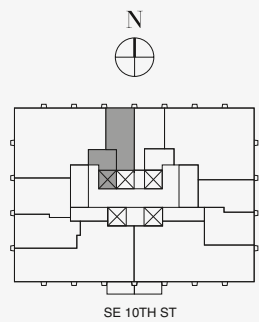
SQUARE FOOTAGES (SQUARE METERS)

Indoor: 2,225 SQF (207 SM)
Outdoor: 262 SQF (24 SM)
Total: 2,487 SQF (231 SM)

FEATURES

888 Suite & 888 Room
Furniture by Dolce&Gabbana
11' Ceiling Height
Loggia & Outdoor Kitchen
Views: North West

FLOOR 63



Biscayne Bay

888 Room

Stated dimensions are measured to the exterior boundaries of the exterior walls and the centerline of interior demising walls and in fact vary from the dimensions that would be determined by using the description and definition of the "Unit" set forth in the Declaration (which generally only includes the interior airspace between the perimeter walls and excludes interior structural components). For your reference, the area of the Unit, determined in accordance with those defined unit boundaries, is set forth on Exhibit "3" to the Declaration of Condominium. Note that measurements of rooms set forth on this floor plan are generally taken at the greatest points of each given room (as if the room were a perfect rectangle), without regard for any cutouts. Accordingly, the area of the actual room will typically be smaller than the product obtained by multiplying the stated length times width. All dimensions are approximate and may vary with actual construction, and all floor plans and development plans are subject to change. The Condominium is not owned, developed or sold by Dolce & Gabbana S.r.l or any of its affiliates (the "Brand"). Developer uses Dolce & Gabbana marks pursuant to a license agreement with the Brand, terminable according to its terms. The Brand assumes no responsibility or liability in connection with the project, and makes no representation or warranty in respect thereof.



JDS DEVELOPMENT GROUP

info@888dolcegabbana.com

