

888 BRICKELL

DOLCE & GABBANA
M I A M I



RESIDENCE D

FLOOR 68

ROOMS

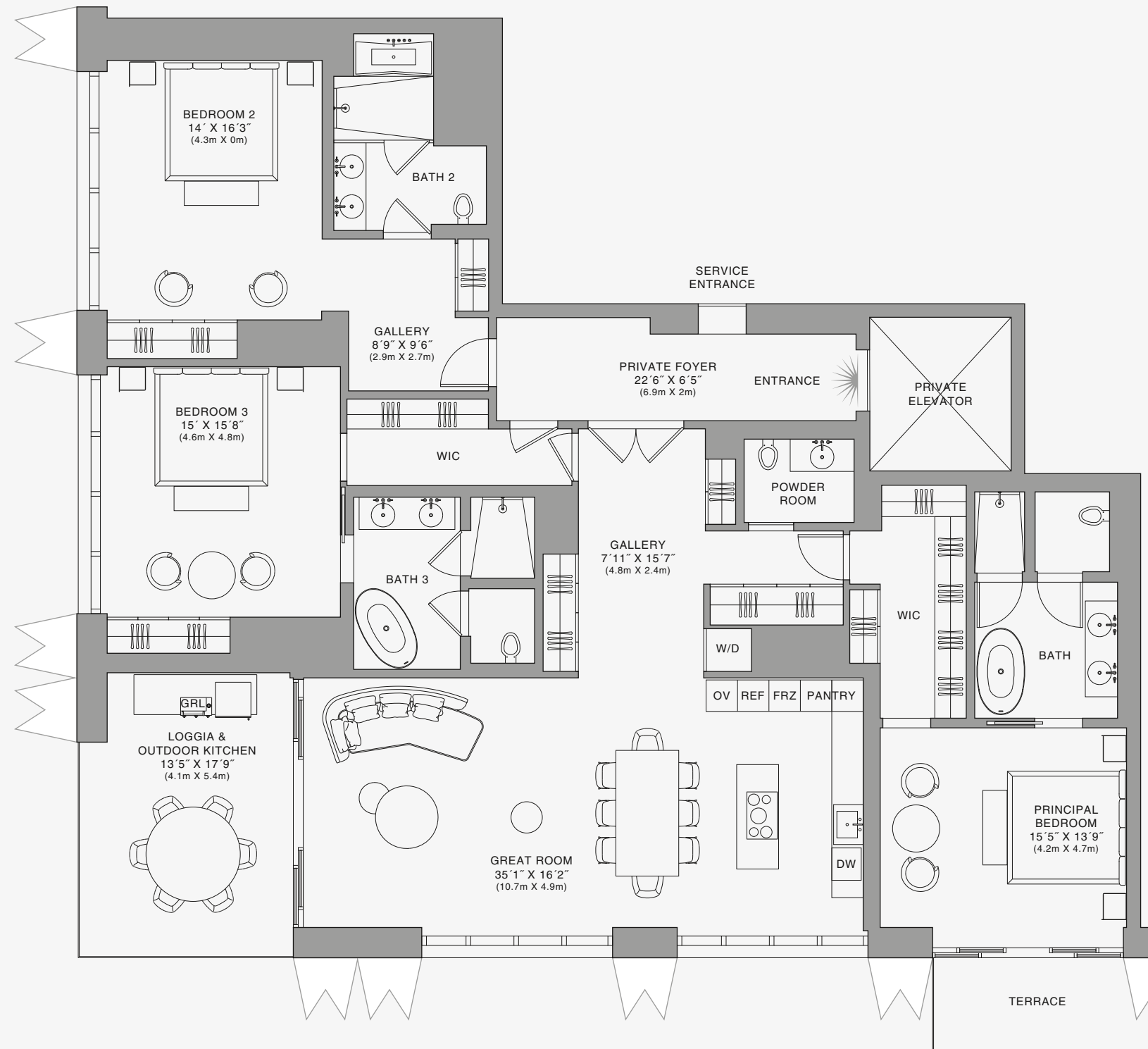
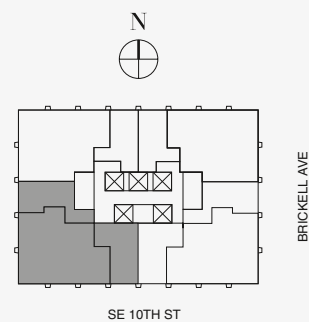
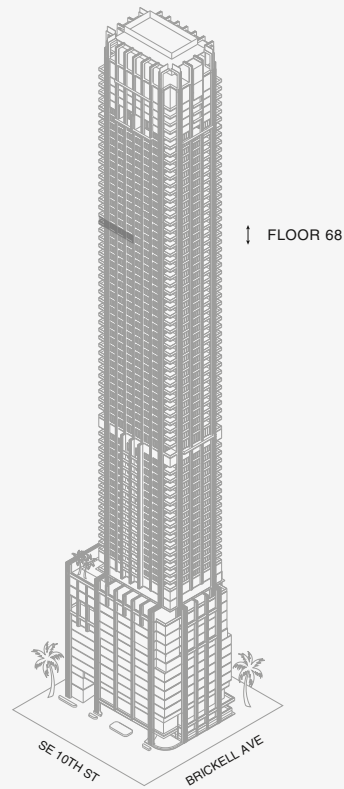
3 Bedrooms
3 Bathrooms
Powder Room

SQUARE FOOTAGES (SQUARE METERS)

Indoor: 2,763 SQF (257 SM)
Outdoor: 262 SQF (24 SM)
Total: 3,125 SQF (281 SM)

FEATURES

888 Suite & 888 Rooms
Furniture by Dolce&Gabbana
11' Ceiling Height
Loggia & Outdoor Kitchen
Views: South West



Biscayne Bay

Stated dimensions are measured to the exterior boundaries of the exterior walls and the centerline of interior demising walls and in fact vary from the dimensions that would be determined by using the description and definition of the "Unit" set forth in the Declaration (which generally only includes the interior airspace between the perimeter walls and excludes interior structural components). For your reference, the area of the Unit, determined in accordance with those defined unit boundaries, is set forth on Exhibit "3" to the Declaration of Condominium. Note that measurements of rooms set forth on this floor plan are generally taken at the greatest points of each given room (as if the room were a perfect rectangle), without regard for any cutouts. Accordingly, the area of the actual room will typically be smaller than the product obtained by multiplying the stated length times width. All dimensions are approximate and may vary with actual construction, and all floor plans and development plans are subject to change. The Condominium is not owned, developed or sold by Dolce & Gabbana S.r.l or any of its affiliates (the "Brand"). Developer uses Dolce & Gabbana marks pursuant to a license agreement with the Brand, terminable according to its terms. The Brand assumes no responsibility or liability in connection with the project, and makes no representation or warranty in respect thereof.

888 Residence



JDS DEVELOPMENT GROUP

info@888dolcegabbana.com



888 BRICKELL

DOLCE & GABBANA
M I A M I



RESIDENCE D

FLOOR 68

ROOMS

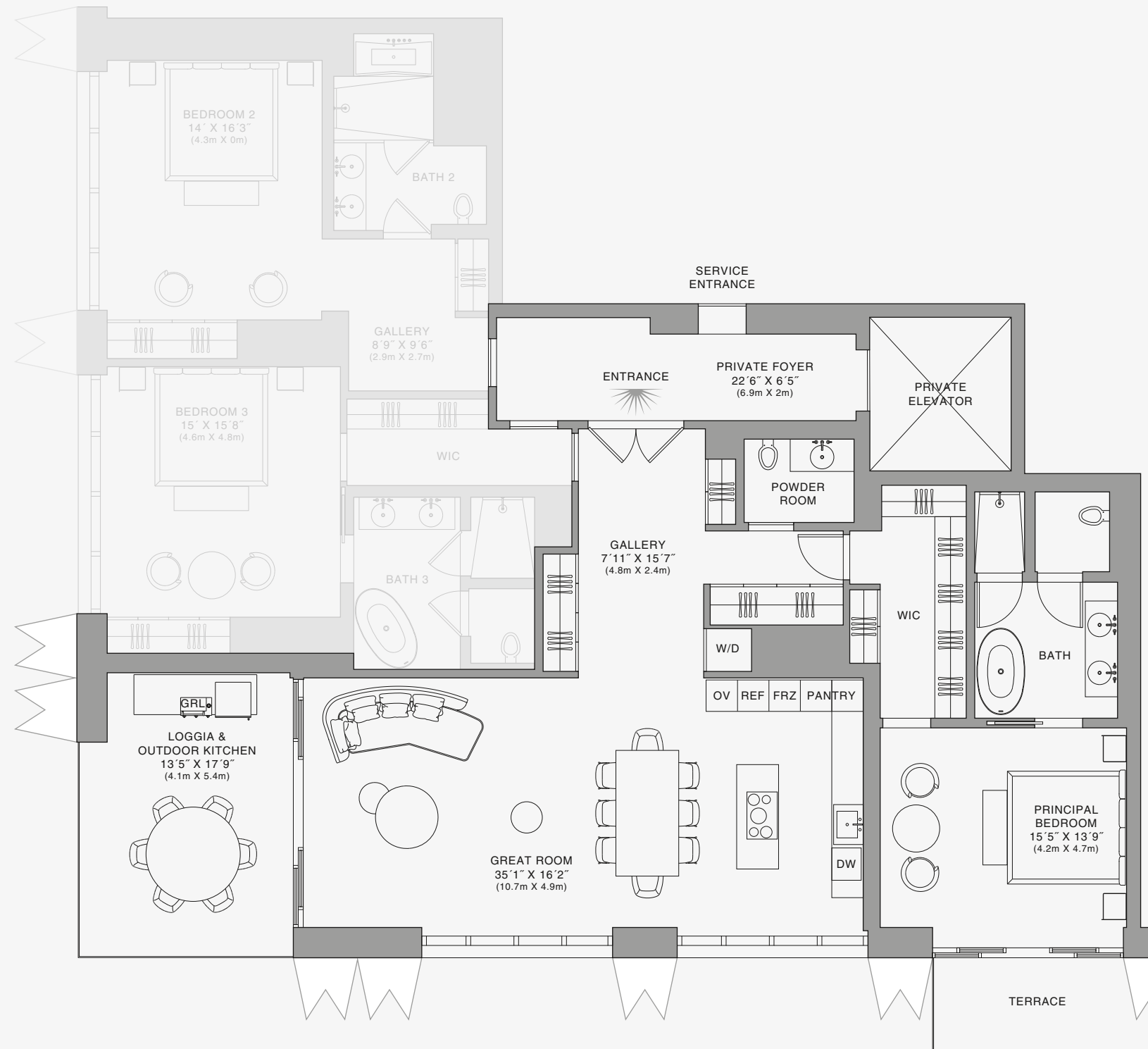
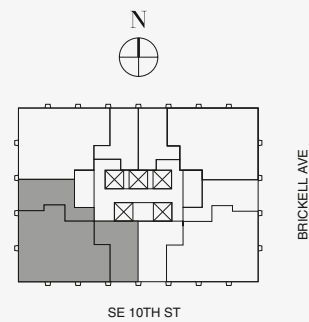
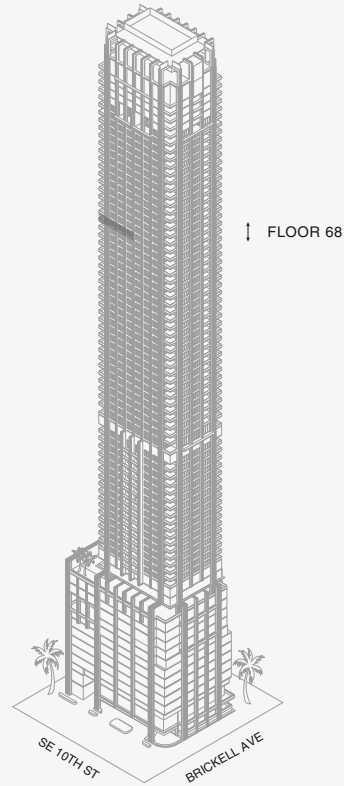
3 Bedrooms
3 Bathrooms
Powder Room

SQUARE FOOTAGES (SQUARE METERS)

Indoor: 2,763 SQF (257 SM)
Outdoor: 262 SQF (24 SM)
Total: 3,125 SQF (281 SM)

FEATURES

888 Suite & 888 Rooms
Furniture by Dolce&Gabbana
11' Ceiling Height
Loggia & Outdoor Kitchen
Views: South West



Biscayne Bay

888 Suite

Stated dimensions are measured to the exterior boundaries of the exterior walls and the centerline of interior demising walls and in fact vary from the dimensions that would be determined by using the description and definition of the "Unit" set forth in the Declaration (which generally only includes the interior airspace between the perimeter walls and excludes interior structural components). For your reference, the area of the Unit, determined in accordance with those defined unit boundaries, is set forth on Exhibit "3" to the Declaration of Condominium. Note that measurements of rooms set forth on this floor plan are generally taken at the greatest points of each given room (as if the room were a perfect rectangle), without regard for any cutouts. Accordingly, the area of the actual room will typically be smaller than the product obtained by multiplying the stated length times width. All dimensions are approximate and may vary with actual construction, and all floor plans and development plans are subject to change. The Condominium is not owned, developed or sold by Dolce & Gabbana S.r.l or any of its affiliates (the "Brand"). Developer uses Dolce & Gabbana marks pursuant to a license agreement with the Brand, terminable according to its terms. The Brand assumes no responsibility or liability in connection with the project, and makes no representation or warranty in respect thereof.



888 BRICKELL

DOLCE & GABBANA
M I A M I

RESIDENCE D

FLOOR 68

ROOMS

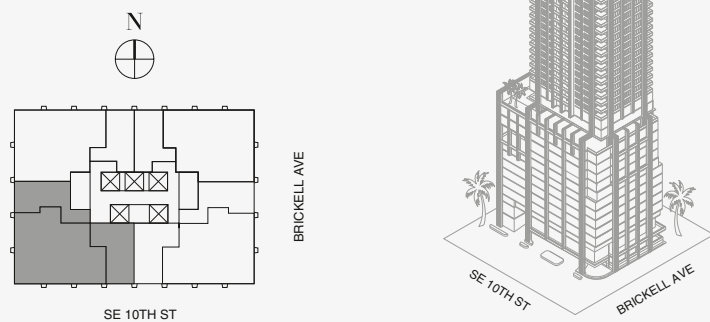
3 Bedrooms
3 Bathrooms
Powder Room

SQUARE FOOTAGES (SQUARE METERS)

Indoor: 2,763 SQF (257 SM)
Outdoor: 262 SQF (24 SM)
Total: 3,125 SQF (281 SM)

FEATURES

888 Suite & 888 Rooms
Furniture by Dolce&Gabbana
11' Ceiling Height
Loggia & Outdoor Kitchen
Views: South West



FLOOR 68



Biscayne Bay

Stated dimensions are measured to the exterior boundaries of the exterior walls and the centerline of interior demising walls and in fact vary from the dimensions that would be determined by using the description and definition of the "Unit" set forth in the Declaration (which generally only includes the interior airspace between the perimeter walls and excludes interior structural components). For your reference, the area of the Unit, determined in accordance with those defined unit boundaries, is set forth on Exhibit "3" to the Declaration of Condominium. Note that measurements of rooms set forth on this floor plan are generally taken at the greatest points of each given room (as if the room were a perfect rectangle), without regard for any cutouts. Accordingly, the area of the actual room will typically be smaller than the product obtained by multiplying the stated length times width. All dimensions are approximate and may vary with actual construction, and all floor plans and development plans are subject to change. The Condominium is not owned, developed or sold by Dolce & Gabbana S.r.l or any of its affiliates (the "Brand"). Developer uses Dolce & Gabbana marks pursuant to a license agreement with the Brand, terminable according to its terms. The Brand assumes no responsibility or liability in connection with the project, and makes no representation or warranty in respect thereof.

888 Room 1



888 BRICKELL

DOLCE & GABBANA
M I A M I



RESIDENCE D

FLOOR 68

ROOMS

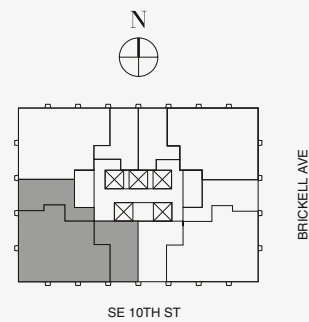
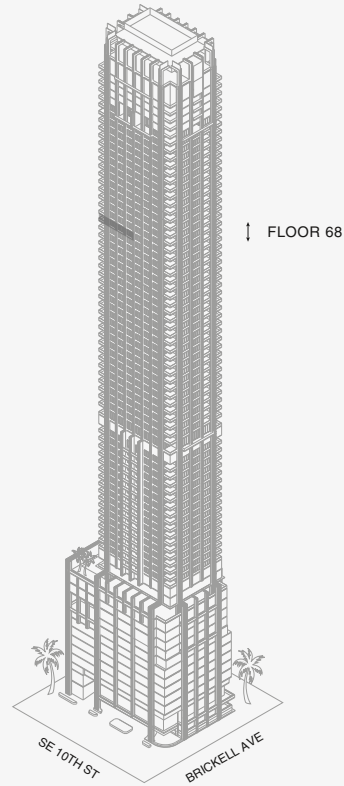
3 Bedrooms
3 Bathrooms
Powder Room

SQUARE FOOTAGES (SQUARE METERS)

Indoor: 2,763 SQF (257 SM)
Outdoor: 262 SQF (24 SM)
Total: 3,125 SQF (281 SM)

FEATURES

888 Suite & 888 Rooms
Furniture by Dolce&Gabbana
11' Ceiling Height
Loggia & Outdoor Kitchen
Views: South West



Biscayne Bay

Stated dimensions are measured to the exterior boundaries of the exterior walls and the centerline of interior demising walls and in fact vary from the dimensions that would be determined by using the description and definition of the "Unit" set forth in the Declaration (which generally only includes the interior airspace between the perimeter walls and excludes interior structural components). For your reference, the area of the Unit, determined in accordance with those defined unit boundaries, is set forth on Exhibit "3" to the Declaration of Condominium. Note that measurements of rooms set forth on this floor plan are generally taken at the greatest points of each given room (as if the room were a perfect rectangle), without regard for any cutouts. Accordingly, the area of the actual room will typically be smaller than the product obtained by multiplying the stated length times width. All dimensions are approximate and may vary with actual construction, and all floor plans and development plans are subject to change. The Condominium is not owned, developed or sold by Dolce & Gabbana S.r.l or any of its affiliates (the "Brand"). Developer uses Dolce & Gabbana marks pursuant to a license agreement with the Brand, terminable according to its terms. The Brand assumes no responsibility or liability in connection with the project, and makes no representation or warranty in respect thereof.

888 Room 2

